



中山大学附属第一医院



中山大学附属第一医院 博士后招聘启事

Recruiting postdoctors from
The First Affiliated Hospital, Sun Yat-sen University

付清玲研究员团队

中山大学附属第一医院简介

中山大学附属第一医院位于中国第三大城市广州市，是国家重点大学中山大学规模最大、综合实力最强的附属医院，门诊量全国第一，是华南地区医疗、教学、科研、预防保健和康复的重要基地，素以“技精德高”在中国和东南亚一带久负盛名。中山大学附属第一医院目前设有 61 个临床科室、15 个医技科室，有耳鼻咽喉科等 5 个学科为国家重点学科，耳鼻咽喉科、变态反应科等 28 个专科为国家临床重点专科，数量居广东之首、全国前三。医院拥有 3000 多平米的公共实验平台及高端仪器设备，近年来省部级以上项目数百项，获专利授权四十余项。

Introduction of The First Affiliated Hospital, Sun Yat-sen University

The First Affiliated Hospital, Sun Yat-sen University is in Guangzhou, China. Our hospital is originally known as The Affiliated Hospital of Guangdong Public Institution of Medicine, was founded in 1910 by Dr. Paul Jerome Todd (an American medical missionary). The hospital is an important base for research, medical service, medical education, preventive care and rehabilitation in Southern China. It is well known for its high quality and excellent service in China and Southeast Asia. There are 61 clinical departments and 15 non-clinical departments in the hospital with a good reputation for clinical service, among which 5 disciplines have been recognized by the Ministry of Education as National Key Disciplines. There are also 28 National Clinical Specialties in the hospital has been selected as a WHO Collaborating Center for Rehabilitation. Over the past 10 years, the hospital has won 90 awards for achievements in research and development. There is a public laboratory with 3000 m² in the hospital. It hosts more than 10 international academic conferences each year.



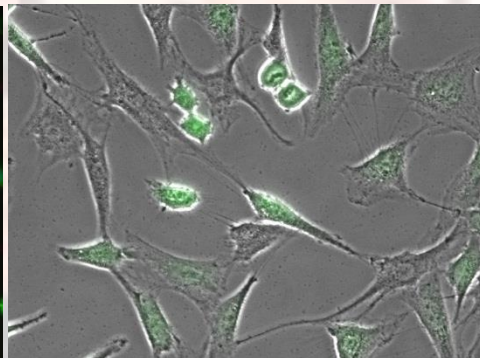
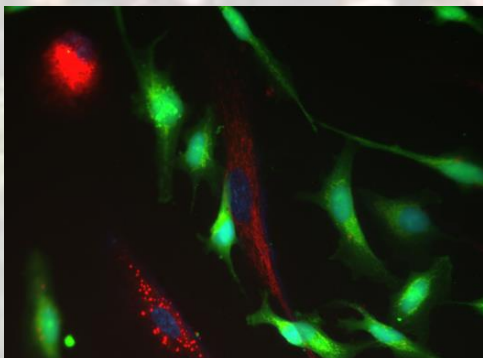
付清玲研究员为中山大学附属第一医院研究员、博导，现为国家优青、新世纪优秀人才、中山大学附属第一医院“三个三”工程项目负责人。主要研究方向为间充质干细胞的免疫调节及临床转化应用，具体包括 iPSC 来源间充质干细胞对各免疫细胞的免疫调节作用，对呼吸道变应性炎症的免疫调节及相应的机制探讨，临床级别多能干细胞来源间充质干细胞的制备及临床转化应用等。

付清玲教授主持国家自然优青、国自然面上（两项）、广东省科技厅重大项目、广东省省自然重大培育、“三个三”工程等十余项科研基金，总经费 1600 余万元。详情请参考以下网址：

<http://ecampus.sysu.edu.cn/tutorapp/rest/tutor/081000.html>。

Prof. Qing-Ling Fu laboratory is a leading group studying the immunomodulation of human iPSC-derived MSCs and is located in The First Affiliated Hospital, Sun Yat-sen University at Guangzhou, China. The laboratory is the key laboratory of Guangzhou. The ongoing projects focus on (1) the immunomodulation of mesenchymal stem cells (MSCs) on T cells, dendritic cells etc., (2) modeling allergic rhinitis and asthma, (3) the induction of clinical grade MSCs derived from embryonic stem cells or human pluripotent stem cells, and (4) the possible mechanisms. Prof. Fu got the National Natural Science Foundation of China for Excellent Young Scholars and New Century Excellent Talent, Ministry of Education, China. The total research funding is about RMB 16 millions. Please find the detailed information on the following website:

<http://ecampus.sysu.edu.cn/tutorapp/rest/tutor/081000.html>.



本研究团队现诚意从海内外招聘**博士后**，招聘要求：1) 具有生物化学、分子生物学、细胞生物学、免疫学或相关专业博士学位，熟悉免疫学及干细胞研究方向者优先；2) 热爱科学研究，具有强烈的上进心，勤于阅读文献，勤于思考，勤于交流，专业理论扎实，动手能力强，团队意识浓厚；3) 发表过第一作者 **SCI** 论文，能在导师指导下独立开展工作。待遇：年薪 20 万左右，出站时业绩突出者可调入。

本研究团队亦诚聘**海内外各层次高级人才**和具有发展潜质的优秀青年学术才俊，包括特聘研究员、副研究员、专职科研人员等，课题组提供充足研究经费，年薪 20-49 万人民币不等。具体岗位要求：特聘研究员、副研究员需具有博士学位，在海内外接受过博士后或相关培训。有意者请联系付清玲教授 fuqingl@mail.sysu.edu.cn。

Now we are recruiting young scientists and postdoctoral fellows in all fields of Immunology/Cell/Molecular biology/Stem cells to join us. Experiences in immunology, molecular biology, or stem cells are highly desirable. Competitive salary, stipend, housing allowance, funds and other benefits will be provided and are negotiable. The annual salary is from RMB 200,000-490,000. Candidates with strong backgrounds and PhD degree in related disciplines are highly desirable. Contacting email: Prof. Qing-Ling Fu, Email: fuqingl@mail.sysu.edu.cn.

